

Immigration to the Czech Republic and Families of Foreigners

Zdeněk Uherek, Milada Horáková,
Tereza Pojarová, Zuzana Korecká

Migration Trends in Europe

- A considerable part of labour migration gradually transformed into migration of asylum seekers or family reunion.
- Migration of families fundamentally distinct from migration of individuals.

Factors of increasing number of foreigners in the Czech rep. in recent 20 years

- Permeability of borders
- No visa requirement in 1990s
- Demand for cheap labor force
- Liberalization of labor market
- Integration of the Czech Republic to world system
- Conflicts and tensions in the source countries
- Low language barriers between Czech Republic and some source countries
- Economic development after 1989

Chart 1: Most frequent purpose of residence in the Czech Republic, 2001-2005

(Source: Foreigners in the Czech Republic, Czech Statistical Office, publication from the years 2001-2006)

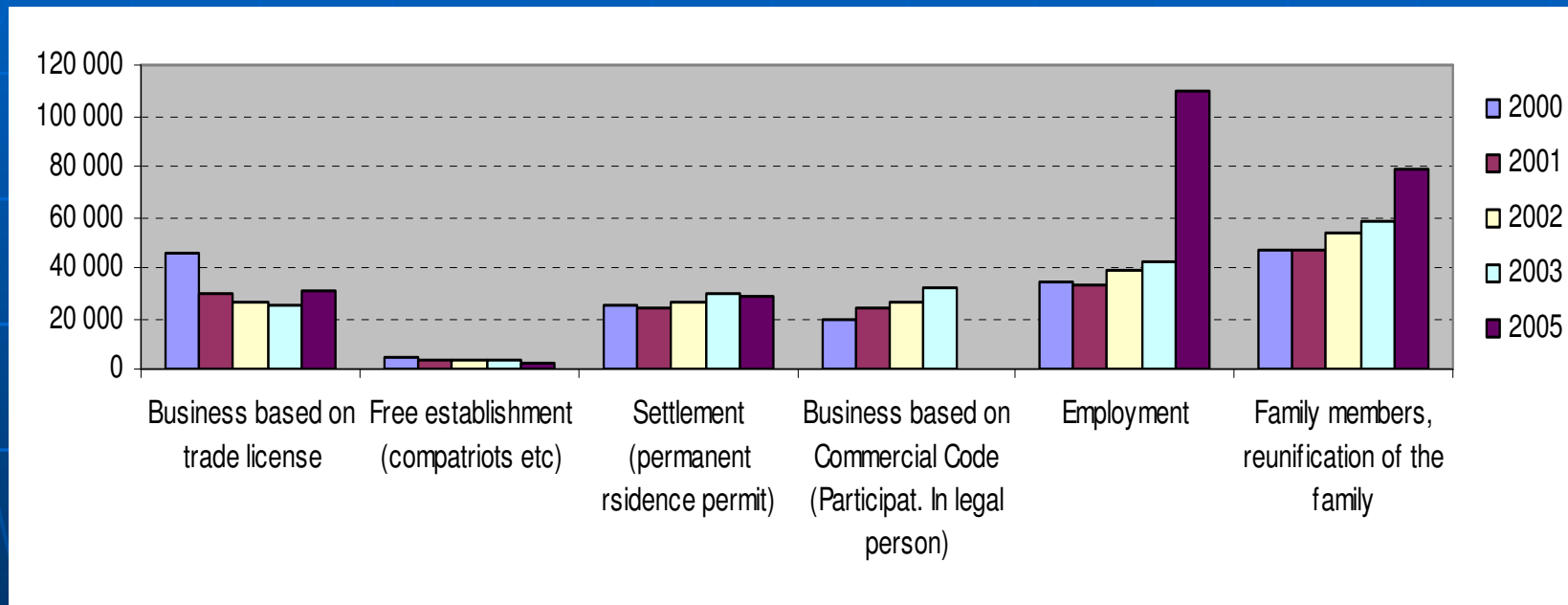


Chart 2: Foreigners with more than 1 year's residence in the Czech Republic, by gender and purpose of residence, as of 31 Dec. 2000

(Source: Czech Statistical Office)

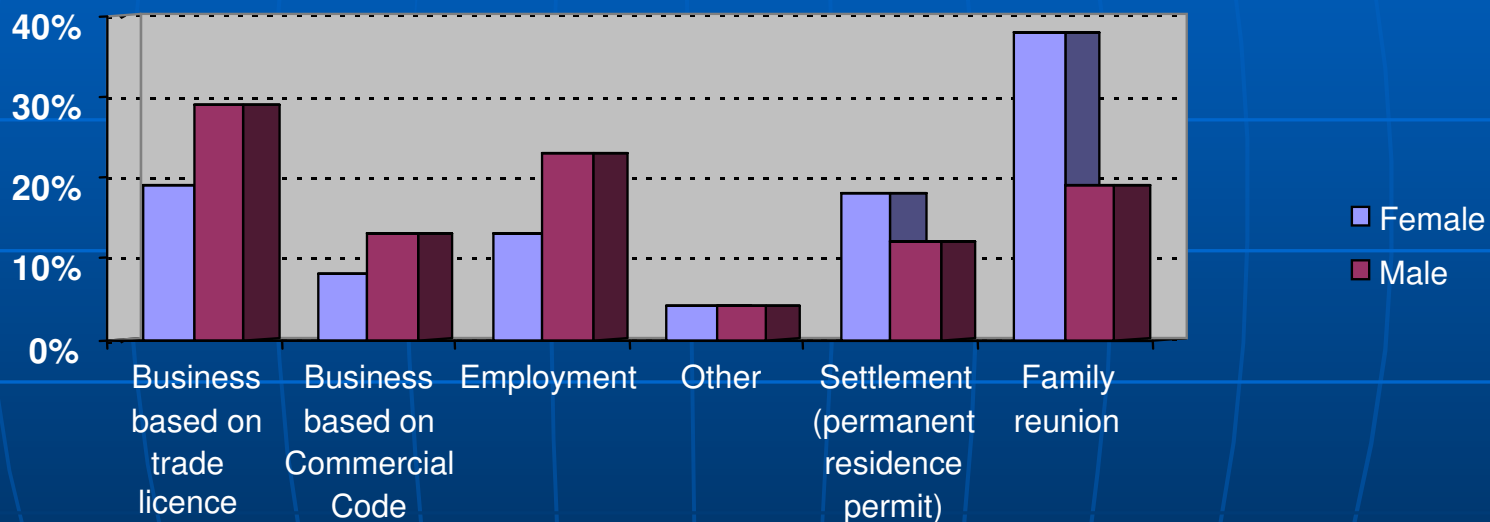


Chart 3: Foreigners with more than 1 year's residence in the Czech Republic, by gender and purpose of residence, as of 31 Dec. 2003

(Source: Czech Statistical Office)

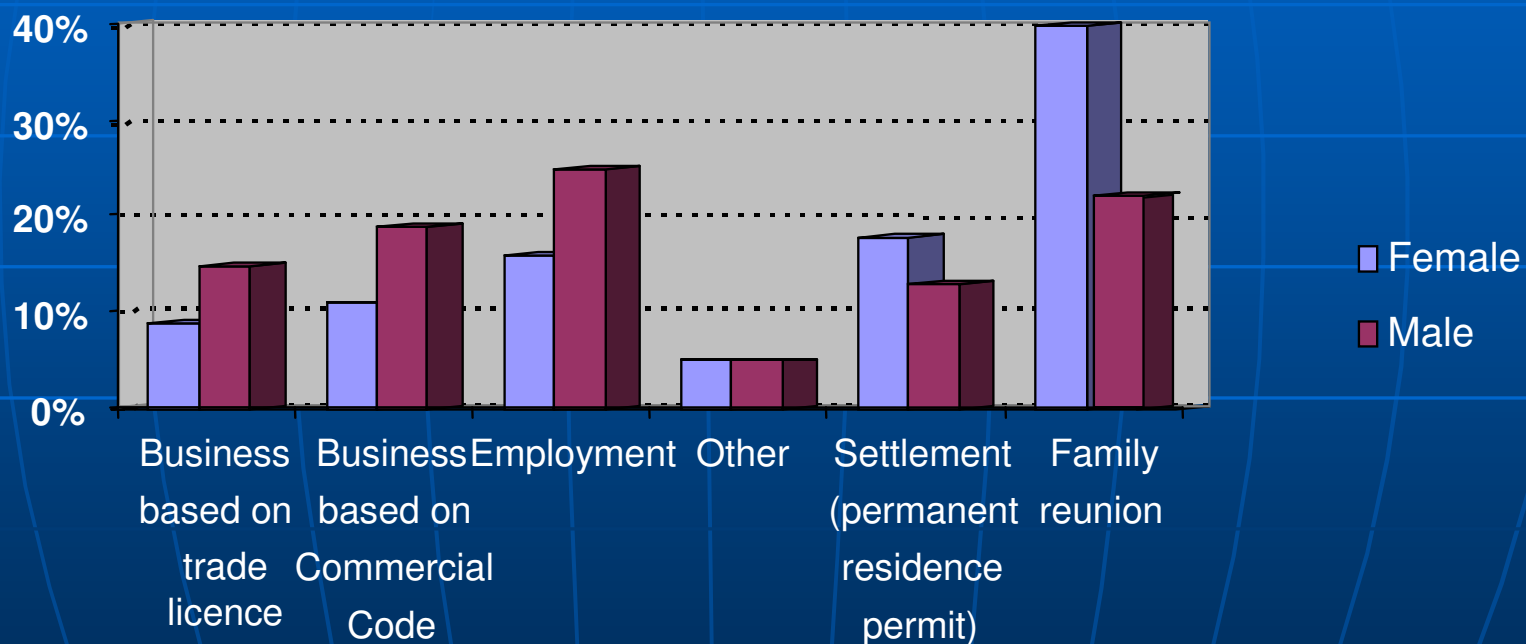


Chart 4: Foreigners resident in the Czech Republic by gender as of 31 Dec. 2006 (figures do include permanent residence and long term residence of >1 year.)

(Source: Czech Statistical Office, independent division of specific statistics.)

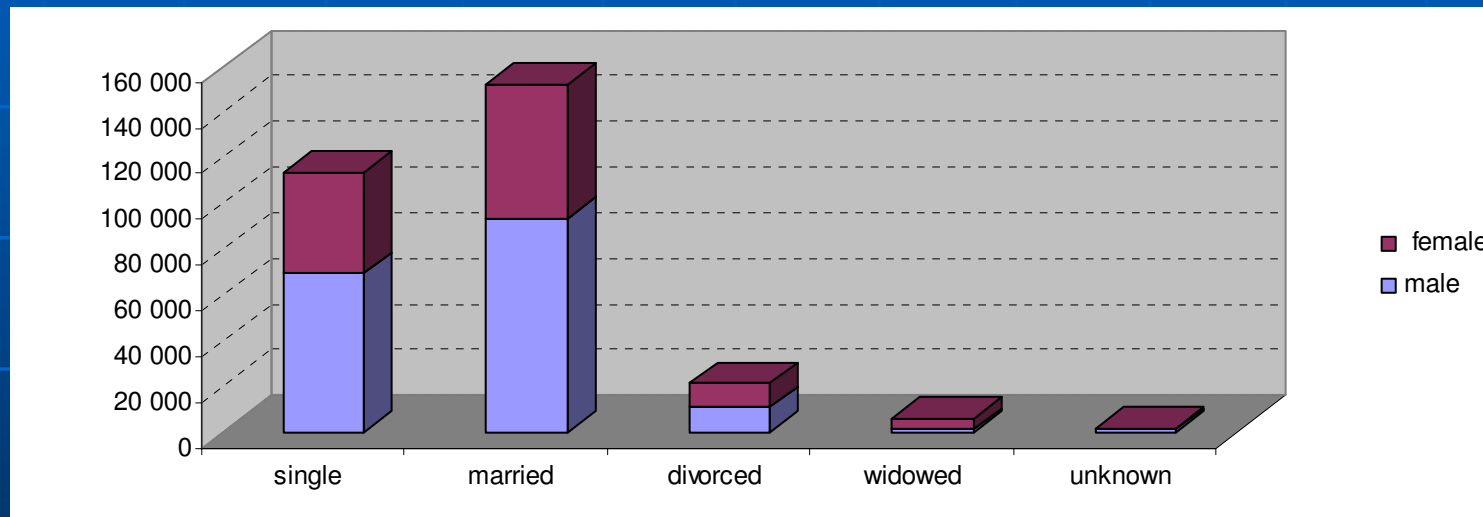


Chart 5: Foreigners' families by age and gender as of 31 Dec. 2006

(Source: Czech Statistical Office, independent division of specific statistics.)

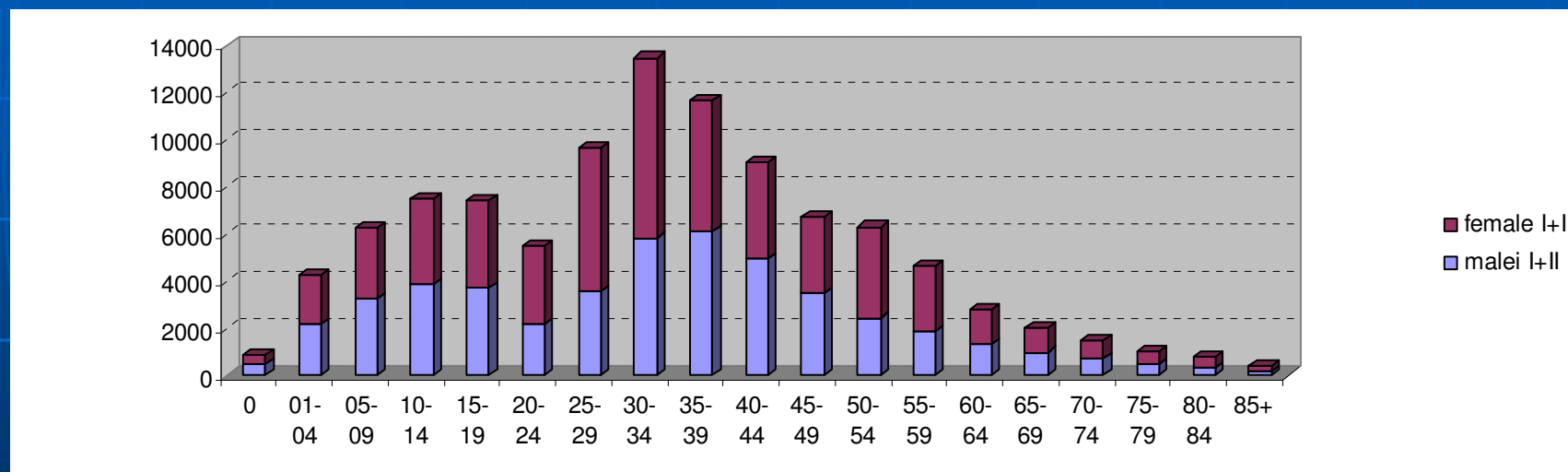


Chart 6: Foreigners' families by gender and citizenship as of 31 Dec. 2006

(Source: Czech Statistical Office, independent division of specific statistics.)

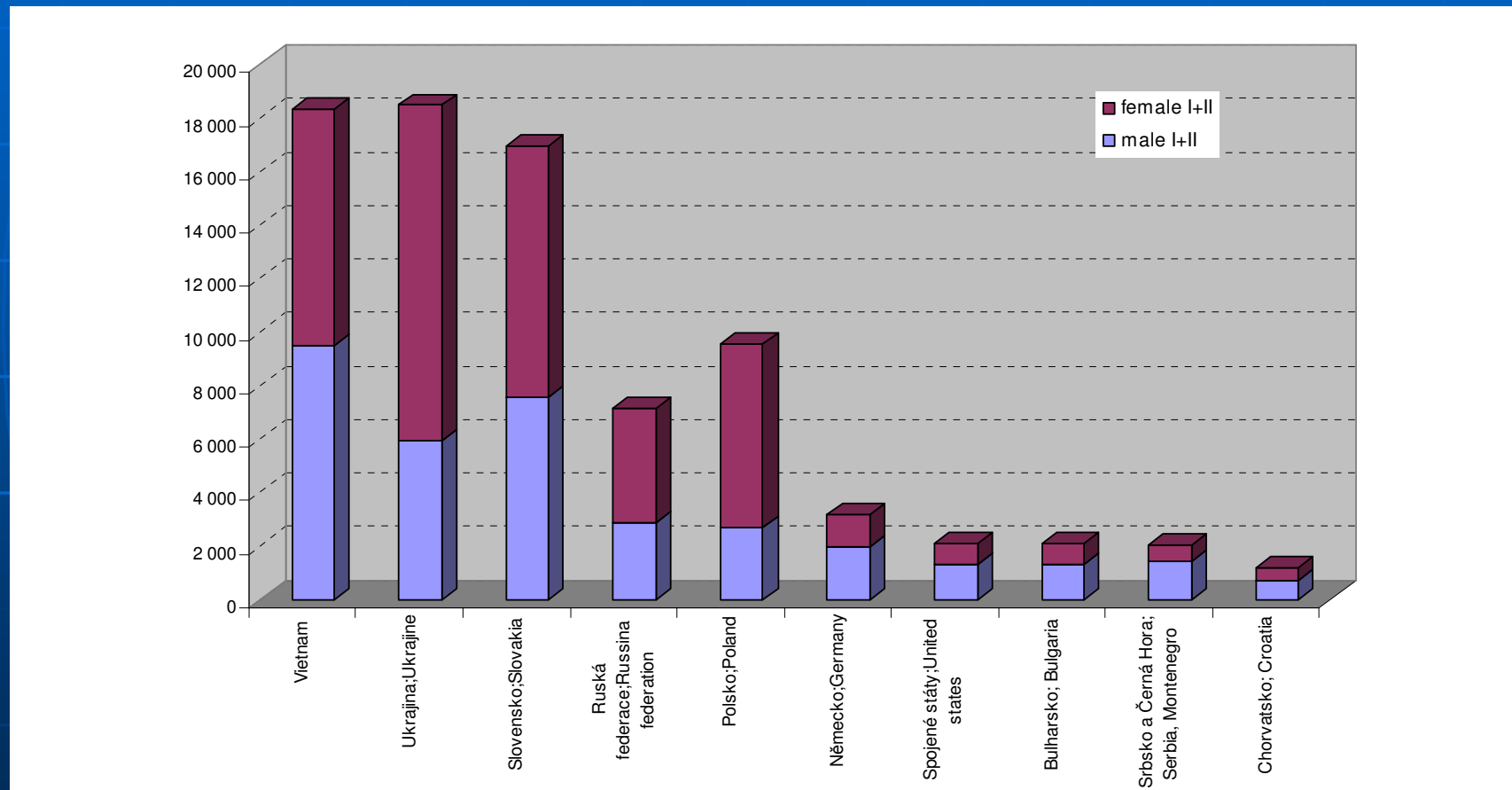


Table 1: Foreigners resident in the Czech Republic broken by gender (figures do not include persons with visas for more than 90 days or those granted asylum) as of 31 Dec. 2006 (figures do include permanent residence and long term residence of >1 year.)

(Source: Czech Statistical Office, independent division of specific statistics.)

Family status	Men	%	Women	%	Total	%
Total	175 927	100.00	118 461	100.00	294 388	100.00
Single	69 354	39.42	44 204	37.32	113 558	38.57
Married	93 528	53.16	58 564	49.44	152 092	51.66
Divorced	10 884	6.19	10 332	8.72	21 216	7.21
Widowed	1 023	0.58	4 856	4.10	5 879	2.00
Unknown	1 138	0.65	505	0.43	1 643	0.56

Table 2: Families of foreigners – by age, gender and purpose, as of 31.12.2006

(Source: Czech Statistical Office)

Age group	Total I	Women I	Total II	Women II
Total	70 334	37 734	31 632	16 610
0	804	403	75	39
01-04	3 670	1 798	589	285
05-09	5 391	2 577	892	442
10-14	6 434	3 100	1 085	550
15-19	6 012	3 009	1 435	744
20-24	3 359	2 008	2 122	1 327
25-29	4 977	3 413	4 691	2 708
30-34	7 938	4 850	5 559	2 809
35-39	7 585	3 862	4 101	1 721
40-44	6 096	2 867	2 962	1 262
45-49	4 630	2 245	2 126	1 025
50-54	4 125	2 450	2 185	1 423
55-59	2 987	1 677	1 650	1 116
60-64	1 908	945	858	500
65-69	1 497	796	519	245
70-74	1 114	604	359	178
75-79	822	484	210	112
80-84	634	397	148	87
85+	351	249	66	37

Table 3: Families of foreigners by citizenship, gender and purpose group, as of 31 Dec. 2006.

(Source: Czech Statistical Office, independent division of specific statistics.)

Citizenship	Total I	Women I	Total II	Women II
Total	70 334	37 734	31 632	16 610
Vietnam	14 986	7 563	3 341	1 276
Ukraine	13 729	9 068	4 745	3 445
Slovakia	8 446	4 538	8 514	4 848
Russian Federation	5 698	3 325	1 446	938
Poland	5 363	3 616	4 178	3 204
Germany	2 081	811	1 090	390
USA	1 535	633	559	151
Bulgaria	1 516	582	559	172
Serbia and Montenegro	1 513	541	500	48
Croatia	1 015	419	167	25
Other	14 452	6 638	6 533	2 113

Chart 4: Recognized refugee households in 2005.

(Source: data from the Czech Ministry of the Interior. Reproduced from: Uherek Z. et al. Integration of Asylum-seekers and the Effectiveness of the National Integration Programme. Prague: Institute of Ethnology.)

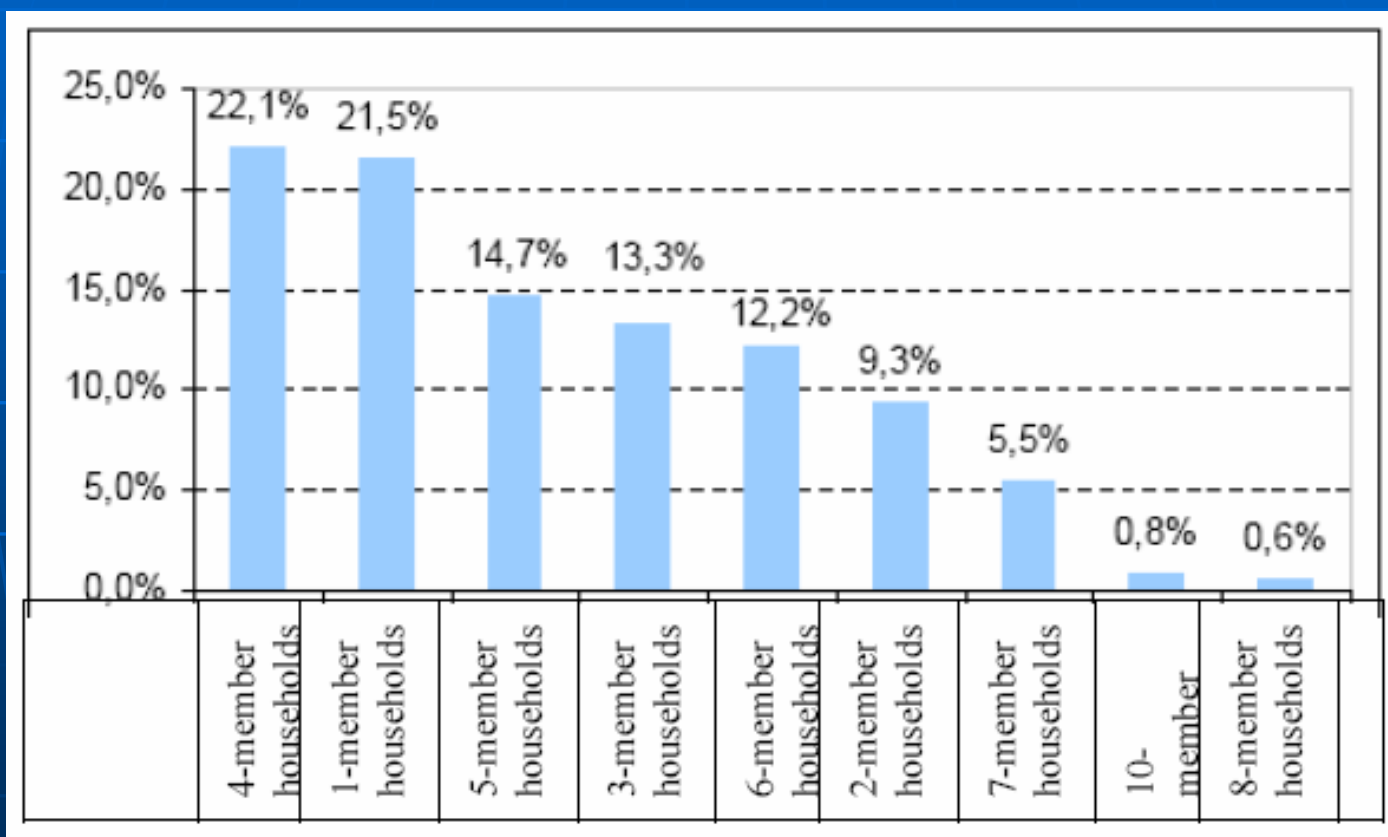


Chart 5: Refugees – Problems that cause the greatest difficulty.

(Source: Uherek Z. et al. *Integration of Asylum-seekers and the Effectiveness of the National Integration Programme*. Prague: Institute of Ethnology)

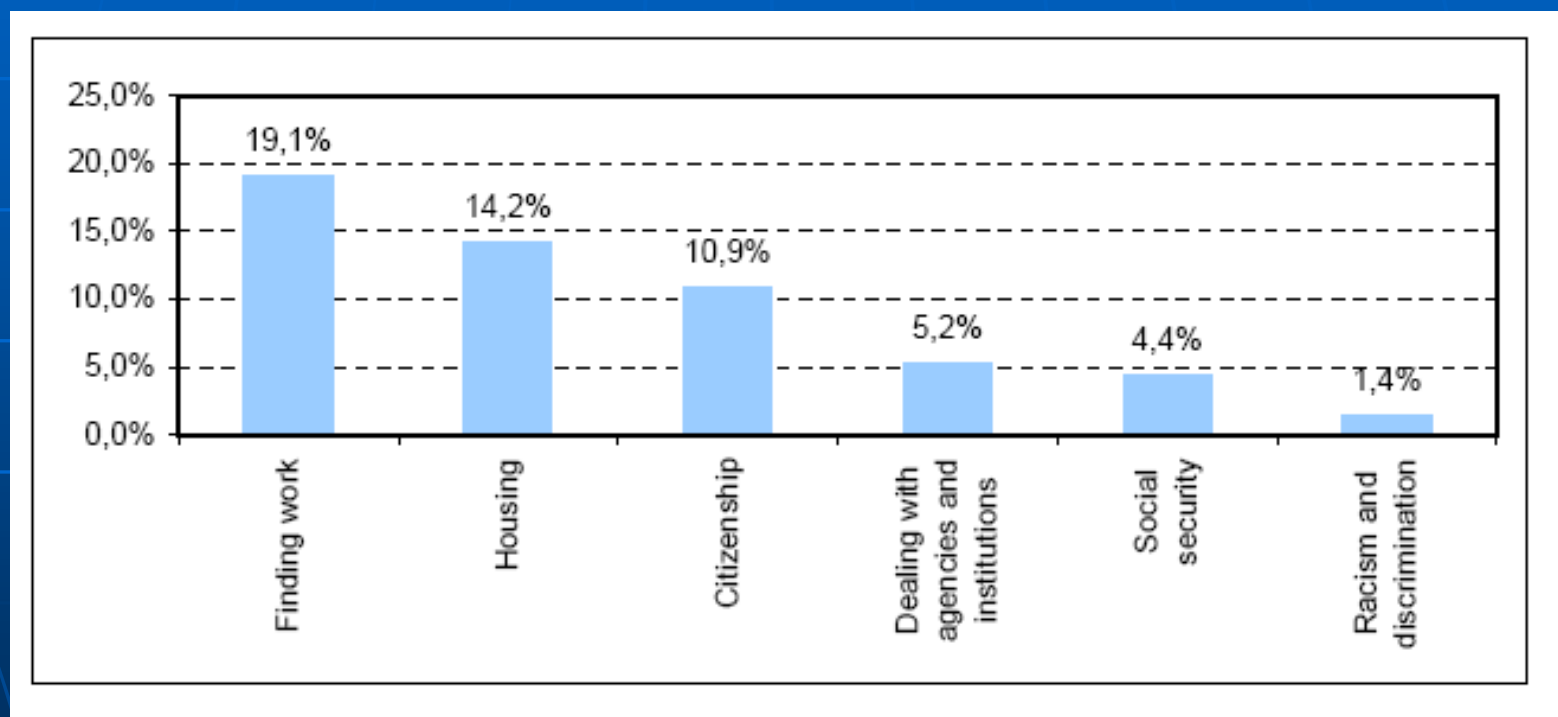


Chart 6.: Refugees – Hopes and aims for the future

(Source: Uherek Z. et al. *Integration of Asylum-seekers and the Effectiveness of the National Integration Programme*. Prague: Institute of Ethnology)

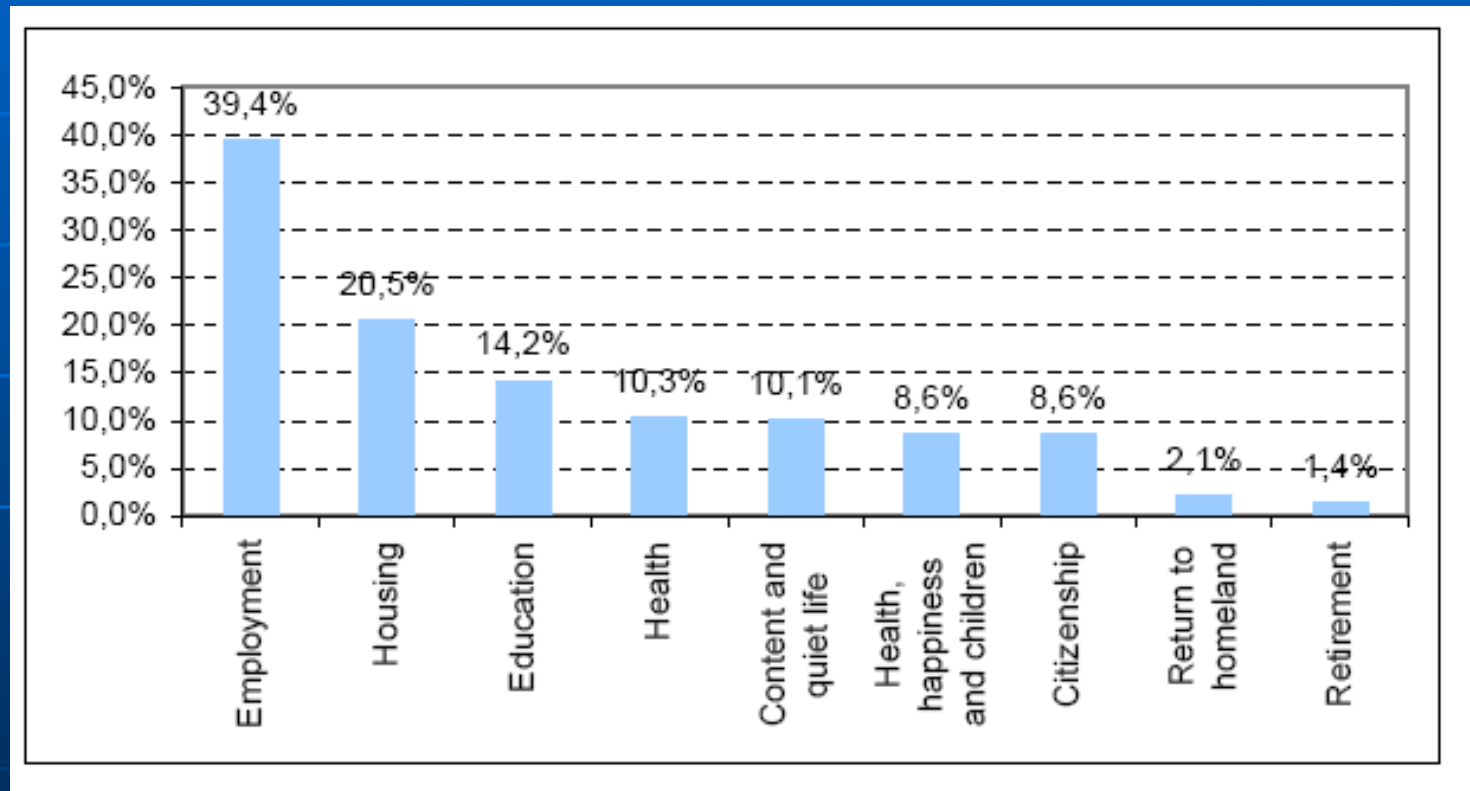


Table 4: Family reunification as purpose of residence among foreign nationals holding permanent residence as of 31 Mar. 2004

(Source: data from the Alien and Border Police Service of the Czech Republic)

State of citizenship	Family reunification with citizen of ČR	Family reunification with foreign nationals
Vietnam	3704	10843
Slovakia	8894	1627
Ukraine	6592	4055
Poland	9212	1625
Russia	2212	2055
Germany	2069	272
Bulgaria	1247	612
Serbia and Montenegro	880	682
Romania	326	920
USA	963	165